

CHSAA

2024 SOFTBALL BULLETIN



Photo credits: Derek Regensberger; Enrique Quintero; Brian Evergood; Seve Abeyta; Ismael Gomez and Brad Cochi



John Sullivan • Assistant Commissioner • jsullivan@chsa.org
Sandra Williamson • Sports Coordinator • swilliamson@chsa.org
Scott Cochran • Rules Interpreter • scott@cochran98.com

Revised 8/5/24



'Seeking Excellence in Academics, Activities and Athletics'

14855 E. 2nd Ave.
Aurora, CO 80011
303-344-5050
now.org



TO: Athletic Directors and Coaches
FROM: John Sullivan, CHSAA Assistant Commissioner
RE: 2024 Softball Season
DATE: July 2024

Welcome to the 2024 Softball season. There are a few items for athletic directors and coaches to remember:

- Double-check your schedule to ensure that none of your players will compete in more than 23 games (Varsity; 19 games Sub-Varsity);
- No individual may play in more than 161 innings, exclusive of games extended because of ties, and exclusive of games in qualifying or state championship tournaments;
- Exception: an individual may participate in a maximum of 168 innings provided she competes in no more than 133 innings at any one level (varsity, JV, sophomore, etc.)
- All Softball protective helmets must have the NOCSAE approved face mask/guard;
- Games can end with the 10-run rule (10 runs after 5, 12 after 4, 15 after 3)
- The media shall be prohibited from being in fair-ball area. The home team or game management may designate an area for the media in foul-ball territory;
- Defensive players are permitted to wear a shield on their face/head protection in the field but it must be constructed of a molded, rigid material that is clear and permits 100 percent (no tint) allowable light transmission;
- Each coach is responsible for ensuring that all regular season Softball game scores are posted on MaxPreps.com.

The CHSAA Constitution and Bylaws are the official rules of the Association. This bulletin provides the regulations for Softball competition, but never supersedes the regulations found in the Constitution and Bylaws. The CHSAA bylaws are posted on [CHSAANow.com > Info](https://chsaa.org/CHSAANow.com).

Good luck and THANK YOU for all you do for our student athletes and bettering the game. If you have any questions, please feel free to call or email me or my assistant and Sports Coordinator, Sandra Williamson, at (303) 344-5050 Ext. 1 (jsullivan@chsaa.org / swilliamson@chsaa.org)

Sincerely,


John Sullivan
Assistant Commissioner

TABLE OF CONTENTS

[Season Calendar](#)

[CHSAA Mission Statement](#)

[CHSAA Advisory Committee](#)

[Major Bylaw Changes](#)

[Legislative Council Report - Softball](#)

[NFHS Rule Changes](#)

[National Federation Playing Rules](#)

[Sport Specific Changes](#)

[Becoming an Official](#)

[CHSSUA Area Directors](#)

[Officials](#)

[MaxPreps](#)

[Regular Season Information](#)

[Playoff Host Information](#)

[Pairing Committee Responsibilities](#)

[CHSAA Season Policies & Information](#)

[State Championship Tournament Hotel Information](#)

[Corporate Info](#)

[CHSAA State Championship Flyer](#)

[CHSCA Flyer](#)

All information in this Bulletin is subject to Change at the discretion of the CHSAA office.

Please follow the revision date as posted.

2024 CHSAA SOFTBALL CALENDAR

August 12 (NFHS Week 6).....	First formal practice
August 15 (NFHS Week 6).....	First contest
October 12 (NFHS Week 14).....	Regular season games must be completed
October 14 (NFHS Week 15).....	CHSAA Regional Pairings Committee Meeting
October 18 & 19 (NFHS Week 15).....	4A/5A Round of 32
October 19 (NFHS Week 15).....	3A Round of 32
October 21 (NFHS Week 16).....	CHSAA State Pairing Committee Meeting
October 25-26 (NFHS Week 16).....	3A/4A/5A State Tournament

Aurora Sports Park, Aurora

CHSAA MISSION STATEMENT

"Seeking Excellence in Academics, Activities, and Athletics"

In pursuit of excellence, the Colorado High School Activities Association strives to create a positive and equitable environment in which all qualified student participants are challenged and inspired to meet their highest potential.

To fulfill this mission the Colorado High School Activities Association will:

- Act as an integral component of the educational process.
- Administrate, interpret, and seek compliance with the CHSAA By-laws as needed to promote fair play within Colorado activities and athletics.
- Provide diverse and equitable opportunities for participation that encourages all qualified students to take part in the activity/athletic experience.
- Provide an environment that enhances personal development through sporting behavior, character education, teamwork, leadership, and citizenship while increasing values that partner the educational standards of the State of Colorado.
- Recognize the outstanding accomplishments of Colorado athletes, teams, coaches, and administrators through our academic and activity awards programs.

Colorado High School Activities Association

2024-2025 SOFTBALL COMMITTEE

Marty Tonjes, Chair, Horizon (2025)
Jon Watson, Fruita Monument (2025)
Jarrett Sweckard, Pueblo South (2025)
Marla Tappy, Brush (2025)
Deb Kortbawi, Highlands Ranch (2025)
Mitchell Martinez, Holy Family (2026)
Brenna Milliken, Arvada West (2026)
Chris Medina, Lamar (2027)
Mike Felice, Mesa Ridge (2027)
Kevin Mickelson, Gunnison (2027)
Emily Dunn, Timnath (2027)

Date of Committee Meeting: November 13, 2024 @ CHSAA office

How to get recommended for a committee: Contact your league president or Legislative Council Representative in February and request to be nominated. From nominations received, the CHSAA Staff makes the selections based on balance of classifications, geographical regions, and other areas to help balance representation.

2024-2025 MAJOR BY-LAW CHANGES

CHSAA Legislative Council Link: [Click Here](#)

CHSAA Bylaws: [Click Here](#)

MAJOR CHANGES 2024-2025

1. *CLASSIFICATION OF SCHOOLS*
Constitution & Bylaws, Article 1500, Rule 1500.1, 1500.2
1500.24, 1500.25, 1500.26 & 1510..... page 40 45
2. *COACHES REQUIRED TO ATEND RULES MEETING*
-- Constitution & Bylaws, Article 16, Rule 1650.1page 50
3. *KEEP SPRING SEASON OF SPORT CONSISTENT*
Constitution & Bylaws, Article 28, Rule 2890 page 119
4. *FOOTBALL SEASON OF SPORT*
-- Constitution & Bylaws, Article 34, Rule 3401.1page 124
5. *ICE HOCKEY SEASON OF SPORT*
-- Constitution & Bylaws, Article 37, Rule 3700.1 page 129
6. *T & PF PROCESS & STRUCTURE CHANGE*
-- CHSAA T & PF Committee Report
Please refer to CHSAANow.com, Legislative Council, January Committee Reports

Please note that the CHSAA staff continually updates the CHSAA Constitution and Bylaws as needed. The most updated document can be found at CHSAA NOW.com,

CHSAA LEGISLATIVE COUNCIL COMMITTEE REPORT
January 30, 2024

SOFTBALL COMMITTEE

Chair: Marty Tonjes

CR 25
Report No.

I. MAJOR CHANGES FROM LAST YEAR'S REPORT:

A. N/A

II. RATIONALE:

A. N/A

III. FINANCIAL IMPACT:

A. N/A

IV. INFORMATIONAL ITEMS

- A. Meeting took place on November 8 2023
- B. Schools will be permitted to host their round of 32 at the state site as long it is on a different complex than their classification would play during the state tournament.
- C. Discussion around 4A and 5A using the same single elimination round of 32 format as 3A did not receive a motion to move forward.
- D. Leagues should establish their own sub-varsity time limits. Recommended time limits would be 1:30 minutes or 1:45 minutes. No new innings would start after the time limit was reached but innings would be completed.
- E. All two day tournaments should follow the same format as shown in the softball bulletin in playing games 1-3 on day 1, and games 4-5 on day 2.

V. SEASONAL INFORMATION

- A. First Practice: August 12
- B. First Competition/Scrimmage: August 15
- C. End of Regular Season: October 12
- D. Round of 32 (regionals): October 18-19
- E. State Tournament: October 25-26

NFHS

2024 NFHS SOFTBALL RULES CHANGES

1-8-6: Permits electronic information to be transmitted to the dugout from anywhere outside of live ball area.

Rationale: The rule change reflects current technology and still requires that electronic devices used for coaching purposes may only be used in the dugout but does not stipulate where the video is recorded or how it is transmitted.

3-2-3: Beginning January 1, 2027, uniforms may only bear a single manufacturer's logo, school name, school logo, mascot and/or the participant's name. Advertisements, messages, team slogans, etc., will no longer be permitted.

Rationale: Consistent language has been established for NFHS sports that describe what information is permitted on the uniform. A player's name, school name, school nickname, school mascot and/or the school logo may be placed on the uniform.

3-2-5: Removes the color restriction for headbands and ribbons.

Rationale: Adds consistency amongst headwear requirements for other NFHS sports.

3-2-7: Defines where a wristband with a playbook/playcard may be worn. If worn by the pitcher, the wristband with a playbook/playcard must be worn on the non-pitching wrist or arm.

Rationale: Clarifies where this equipment can be worn. This change will prohibit wristbands from being worn on the belt. It remains legal for players to keep the wristband with a playbook/playcard in their back pocket.

4-2-7, 10-2-3e, h: The umpire may call (end) a game if playing conditions in or around the facility become unacceptable to safely continue the game.

Rationale: Provides rule justification when an umpire ends a contest due to unacceptable playing conditions to continue play in addition to weather.

6-1-2c, 2-47: The pitcher may now have both feet off the ground at the same time as long as both feet remain within the 24-inch width of the pitching plate and the pitcher does not replant the pivot foot. A definition for a replant was added.

Rationale: The rule change permits both feet to disengage from the playing surface while delivering a pitch. The addition of Rule 2-47 defines that a replant of the pivot foot occurs when the pitcher pushes off the playing surface from anywhere other than the pitcher's plate prior to the act of delivering the pitch.

6-2-2: Pitchers shall only use dirt, powdered rosin or comparable drying agents that are listed on the USA Softball's certified equipment webpage to dry the hand.

Rationale: Clarifies the difference between tape and other non-approved substances on the pitching hand or fingers versus the use of approved substances under the supervision and control of the umpire.

2024 SOFTBALL EDITORIAL CHANGES

1-5-1c, 1-6-1, 1-7-1, 2-4-3, 1-6-1b, 7-1-2 PENALTIES 2 & 3, 7-4-4

2024 SOFTBALL POINTS OF EMPHASIS

1. Game Management
2. Unacceptable Conditions
3. Unreported vs. Illegal Substitutions
4. Pitching Mechanics: Replant

SPORTS MEDICINE ADVISORY COMMITTEE



For all CHSAA sports medicine policies, procedures, and protocols as well as the CHSAA Lightning and Tornado Policy and Procedures and Heat Acclimatization and Safety Priorities can be found in the [Sports Medicine Advisory Committee Handbook](#).

CHSAA SPORTING BEHAVIOR MANUAL

[Game Management & Sportsmanship Expectation Links](#)

BECOMING AN OFFICIAL

If you or someone you know is interested in becoming an official, please contact the CHSAA official's office at mtillman@chsaa.org.

AMERICANS WITH DISABILITIES ACT

Please note: All rules and policies contained within this bulletin are subject to the ADA's requirement to provide reasonable modifications for a disabled student(s). A reasonable modification(s) shall provide a disabled student with equally effective access [to the activity] unless the provision of such reasonable modification would constitute a fundamental alteration of the essential elements of the activity involved. Please refer to CHSAA bylaw 500 for more detailed information.

MINI CHAMPIONSHIP TROPHIES

The personal trophies are a great way for individuals to commemorate their team accomplishment.

You can find the link for the Personal Trophy PDF [HERE](#).



SOFTBALLS:

*The A9011BSST is mandatory to use in all CHSAA post season games including Championships

- A9011BSST – 12” Leather *Official Ball of CHSAA

Wilson Representatives

Chase Hanchett - Territory Manager
Account Manager

chase.hanchett@wilson.com

Craig Kalb – National

craig.kalb@wilson.com

MAX PREPS INFORMATION



Please use the following steps to start the MaxPreps process:

EXISTING USERS

1. Go to www.maxpreps.com
2. Select "Sign In" on the top right-hand side of the webpage.
3. Enter your e-mail address –This will be the e-mail address used to access your team.
4. Enter your password that you set when creating the account. If you do not remember your password, you can click the Forgot Password link on the Sign In page or you also can contact MaxPreps support at support@maxpreps.com, or MaxPreps Colorado representative, Gerry Valerio at gvalerio@maxpreps.com.
5. After entering your password, a person icon will appear at the top right-hand side of the webpage. Hover the mouse cursor over the icon and a dropdown box will appear with your list of coach admin accounts.
6. Click on the team you want to access to go to the coach admin, where you can update your schedule, roster and enter/edit stats.
7. The next time you visit the site, simply click on "Sign In" to access your team.

NEW ATHLETIC DIRECTORS/COACHES

1. Go to www.maxpreps.com
2. Select "Sign In" on the top right-hand side of the webpage.
3. On the Sign In page, click the Create an Account button in the middle of the page.
4. Enter your email address and complete the prompts through the registration process and select the appropriate role.
5. Once the membership process is completed, you will be prompted to Request Access.
6. Fill out the Request Admin Access form and it will be sent to MaxPreps for review.
7. You also can contact MaxPreps support at support@maxpreps.com for access, or contact MaxPreps Colorado representative, Gerry Valerio, at gvalerio@maxpreps.com.
8. Once this is complete you can follow the above instructions for Existing Users to login into your account.

CHSAA REGULAR SEASON GAME MANAGEMENT REMINDERS

MAXIMUM TEAM CONTESTS

Member schools that are in a classification that does not have a district tournament shall not participate in more than 23 games, exclusive of region and state contests during a season. Member schools that are in a classification that has a district tournament shall not participate in more than 19 games, exclusive of district, regional and state contests during a season. No member school shall permit any of its sub-varsity softball teams to participate in more than 19 games.

MAXIMUM INNINGS INDIVIDUAL

No individual may participate in more than 161 innings, exclusive of games extended because of ties, and exclusive of games in qualifying or state championship tournaments.

Exception: A student may participate in a maximum of 168 innings provided she competes in no more than 133 innings at any one level (varsity, JV, sophomore, etc.)

PROTESTS

No protests involving the judgment or possible misapplication of a rule by a game official will be considered by the CHSAA. However, coaches may direct questions to the game officials as they pertain to possible misapplication of the rules, at the time of the occurrence, in accordance with National Federation rules governing that sport.

MAXPREPS – GIRLS' SOFTBALL COACHES

MAXPREPS is the official site we use to collect data for regular season scores and statistics. Please report all game information to this site (www.maxpreps.com). More information and a user guide may be found on the CHSAA homepage: www.chsaanow.com

NOTE: The out-of-state opponents and scores must be verified by the Colorado team and entered on the MaxPreps website.

COACHING REGISTRATION REQUIREMENTS

Each year, by the first competitive date of each sports season, all member school athletic/activity directors must enter all of their athletic coaches and activity sponsors (music, speech, student leadership, etc.), regardless of level, rank, or pay, into the CHSAA Database. All first-year athletic coaches and activity sponsors, regardless of level, rank, or pay, must complete the CHSAA 1st Year Coaches Course. This year coaches are required to take a course in mental health awareness.

For more information regarding new coaching registration requirements please see CHSAA Handbook Bylaw 1620

❖ Officials

- **Dressing Room- Restrictions/Supplies.** Where possible the official's dressing room should be located in an area with the most direct access to the playing field and or court. The officials' dressing room shall be used as a changing area for game officials only. It should be private. No other individuals shall have access to this area for any purposes unless they can be identified as game management, CHSAA personnel, and/or the officiating observer. The room shall be stocked with water. It is recommended that soft drinks and/or isotonic beverages be made available. A sign should be placed on the officials' dressing room door that states: "Officials' Dressing Room. No admittance per CHSAA."

Please note that for some sports like soccer, baseball, softball, etc, games are played at sites that have no designated dressing areas for officials. Designated parking areas that include a temporary means for private dressing/changing, is strongly encouraged.

- **Security** - It is the responsibility of game management to provide security escort for game officials to and from the playing field or court. If possible, the officials should be escorted to the parking lot.
- **Arrival at Site** - Game officials are required to arrive at the game site per their officiating association's policy. If an official arrives at the game site within 15 minutes of the start of the game, game management should contact the CHSAA office after the game.
- **Communication with Officials** - Except for contact as is necessary by game management all others are prohibited from talking to the officials before, during, at halftime or after games concerning matters related to the game. Officials are asked to report any such violations to the CHSAA office.

❖ Coaches

- **Sporting Behavior Cards** - The Officials shall provide each varsity coach with a business size card with their sports officiating association's sportsmanship statement. This card, which also contains the names of the officiating crew, shall be presented at time that is designated by that sports pre-game procedure. **Both opposing coaches are asked to evaluate the crew of officials after each game. Click on this Rate Your Contest Officials link on chsaanow.com. Depending on the browser used, coaches may need to print the completed document in a pdf form and send to Mike Book at mbook@chsaa.org.** This is very important for the selection of post season umpires.
- **Introduction of Starting Lineups** - Leagues shall create a standard introduction-of-teams procedure. For interleague play, the visiting coach should be contacted prior to the day of the game to get agreement on the use of the home team's introduction procedure.

"CHEER FOR YOUR TEAM, NOT AGAINST THE OPPONENT"

Softball Specific Sportsmanship Items

- Noisemakers are prohibited in the dugouts, including shakers, cowbells and anything that is prohibited in the stands.
- Over the past several seasons, a disturbing trend has emerged in softball. Teams have taken up the habits of “cheering” for their teammate at bat in such a raucous manner as to disrupt the opposing team’s pitcher. In some cases, this appears to be a rehearsed action and only occurs when the pitcher is in her windup. This “attempted disruption” whether intentional or unintentional is not acceptable and will be addressed by game management should it become apparent that activities of this type are being employed.
- Any kind of taunting is prohibited by rule and umpires continue to be responsible for what they deem to be taunting and/or enticing an illegal pitch.

PLAYER EJECTION

Any player who has been ejected from a match or contest shall be disqualified for the remainder of that match or contest. In addition, the player shall be suspended from competition for the next scheduled match or contest played at the same level (sophomore, junior varsity, or varsity).

COACH EJECTION

A coach ejected from a contest for committing an unsportsmanlike act shall be suspended from coaching for the next 2 regularly scheduled contests of the same level. He/she may not coach in any other contest at any level during this time.

A coach ejected from a game is automatically placed on probation according to policies established by the Board of Directors (For necessary action by the school administration, see Bylaw 2420.11).

A coach ejected from a game is required to complete the following courses offered on-line by the National Federation of State High School Associations (NFHS): Sportsmanship; and, Teaching and Modeling Behavior. These courses shall be completed before he/she will be removed from probation and must be finished in a reasonable amount of time during the season to be determined by the school’s athletic director.

GAME ENDING PROCEDURE

Regular Season Games: In the following three situations, any game which is terminated by darkness, rain or other cause will be considered a suspended game and shall continue from that point of suspension at the earliest time possible:

- (a) *Before* it is a regulation game, or
- (b) *After* it is a regulation game, and
 - (1) It is tied, or (2) An inning is in progress and before the inning is completed, the visiting team has scored one or more runs to take the lead, and the home team has not retaken the lead.

However, in all cases any remaining play may be shortened or terminated by mutual agreement of the opposing coaches or designated within league bylaws.

Example 1: *The top of the 1st inning is completed with no score. The game is called. RESULT: A suspended game.*

Example 2: *In the bottom of the 3d, there is one out and a runner on first with the home team leading, 21-1. The game is called. RESULT: A complete game because of the mercy rule.*

Example 3: In the bottom of the 3rd, there is one out and a runner on first with the visiting team leading, 21-1. The game is called. **RESULT:** A suspended game.

Example 4*: At the end of the 5th inning, either team is leading 4-2. The game is called. **RESULT:** A complete game.

Example 5: At the end of the 5th inning, the score is tied. The game is called. **RESULT:** A suspended game.

Example 6*: At the end of the 5th inning, the visiting team is leading 1-0. In the top of the 6th inning, the visitors go up 2-0. In the bottom of the 6th, the bases are loaded with no one out. The game is called. **RESULT:** A complete game. The score reverts to five innings and the visitors win 1-0. The reversion is permissible because the visitors were winning at the end of five innings and the lead was not impacted.

Example 7*: At the end of the 5th inning, the home team is leading 1-0. In the top of the 6th inning, the visitors go up 2-1. In the bottom of the 6th, there are two out and no runners on base. The game is called. **RESULT:** A suspended game. The score cannot revert because the winner would be changed.

Sub Varsity time limits should be established by each league and shared with umpires prior to games.

CHSAA DRONE POLICY

"The use of drones, also known as unmanned aerial vehicles, is prohibited for any purpose by any persons at all CHSAA-sanctioned events, unless express written permission is obtained: 1) from the host school district during regular season contests, or 2) the CHSAA for any postseason/playoff contest. This policy includes not only the restricted playing area of the venue(s), but also the physical confines of the entire stadium/field/arena structure. For the purposes of this policy, a drone is any aircraft without a human pilot on board."

COMMEMORATIVE PATCHES

The Colorado High School Softball Umpires Association will allow commemorative or memorial patches/stickers/decals, to include but not be limited to special causes and/or military support that will be uniformly placed, not to exceed 4 square inches, to be worn on jerseys in an appropriate and dignified manner without compromising the integrity of the uniform. The Association will also allow uniforms to be specially designed for athletes and coaches that support the above causes, as long as the uniform does not violate any other rules related to numbers, lettering, etc. The uniforms do not have to be in team colors, so long as all coaching uniforms match and all athlete uniforms match. Further clarification states that any lettering or emblems on uniforms must pertain to one or more of the following: school name, school nickname, individual's name, the sport, drug use prevention, a specific cause, sportsmanship, ethics or integrity or be of a patriotic nature and provided it does not violate the rules of the sport in regard to other guidelines.

NATIONAL FEDERATION PLAYING RULES

All games -- regular season through playoffs -- shall be played under National Federation and CHSAA rules. Please be aware that neither a league nor competing schools have the authority to modify rules.

BENCH AND FIELD CONDUCT

Please emphasize this information to your coaches and players. This will help alleviate some of the pressure put on umpires. (N.F. Rule 3 Section 6 Articles 1-20, page 37-39 in rulebook.)

REGULAR SEASON SCHEDULING

Schools are responsible for their own schedules during the season.

SHORTENED CONTESTS

In regular season tournaments, regional and state play:

1. If, after five complete innings of play, a team is ahead by 10 runs the game will be declared official. If, after 4-½ innings of play, the home team is ahead by 10 runs, the game will be declared official. **(15-runs after 3, 12 after 4, 10 after 5)**
2. We do not use international tie breakers in high school softball.

NOTE: Regular season tournaments may elect to use a 1-½ hour time limit in conjunction with the 10-run difference.

3. Sub Varsity time limits should be established by each league and shared with umpires prior to games.

NFHS SOFTBALL BAT INFORMATION

The NFHS Softball Rules Committee made the determination that clarification was needed to ensure each batter comes to the plate with a bat displaying the proper certification mark making it legal for use in high school play. Bat manufacturers produce several models of bats for multiple organizations. These different models are often custom designed to meet the specific organizations' individual certification requirements. Bats that are custom designed for one organization may only bear that organization's certification mark. Conversely, many these bats are designed to meet several organizations' requirements and will bear multiple organizations certifications marks - making them legal to use in multiple rules codes.



NFHS Softball recognizes and utilizes USA Softball's certification process. In order for a bat to be legal for use in NFHS softball it must be marked with the ASA 2000, 2004 or the USA Softball All-Games Certification Mark. All bats that are approved by

USA Softball, formally ASA, for use in fast pitch play shall bear one of the markings shown below.

Additionally, any bat with one of these certification marks must not appear on the list of the USA Softball Non-Approved Bats with Certification Marks. This list was created as a way to alert players and coaches that a bat that was once approved for use has now been deemed no longer approved for use. Once these bats have entered the market and possible issues arise, there is a process for revoking the approval of these bats. When it has been determined that a bat should have its approval revoked, either through the re-testing process or for a voluntary removal from the manufacturer, the bat is added to the Non-Approved Bats list with Certification Marks. These bats were approved when originally manufactured and were legal for play at that time, but due to some unforeseen issues no longer pass the approval requirements.

Link to the USA Softball Non-Approved Bats with Certification Marks:

<https://usa.asasoftball.com/e/BB1P2000.asp>

SOFTBALL AREA DIRECTORS 2024

1 - Denver Metro

2 - Boulder & Longmont

3 - Fort Collins & Greeley

4 - Northeast

5 - Colorado Springs & Cañon City

6 - Pueblo

7 - Western

8 - Southeast

9 - Salida, Buena Vista & Alamosa

1 - Chris Eckert

chssuaarea1@gmail.com

(303) 947-4796

1 - Reuben Maes

Reuben_maes@msn.com

(303) 261-5295

1 - Jason Cross

cths2016@gmail.com

(720) 416-9892

2 - JOSEPH RYAN

coloradoreddevil7@gmail.com

(970) 829.2471

3 - BILLY BROTHERTON

william.brotherton.jr@gmail.com

(970) 412-9674

3 - DAVE RAMIREZ

dave_ramirez@comcast.net

(970) 481-9424

4 - KEVIN FERGUS

k.fergus@hotmail.com

(970) 630-2476

5 - KYLE FOLEY

kyle.foley62@att.net

(580) 713-1085

6 - RICK SOARES

ricklikeke@comcast.net

(970) 580-2290

7 - JEFF MODELMOG

tireguy@rof.net

(970) 379-8225

8 - ANTHONY RANGEL

lajuntablue@gmail.com

(719) 469-6955

9 - DAVE GRANZELLA

d.granzella@yahoo.com

(719) 221-2362

9 - RODNEY MARTINEZ

a.rod.martin65@gmail.com

(719) 580-0496

OFFICIALS INFORMATION AND OFFICIALS PAY

USE OF REGISTERED OFFICIALS

All CHSAA member schools must use only officials registered with the CHSAA for all varsity and junior varsity contests (strongly recommended for sub-junior varsity contests). All registered officials receive a registration card each year, with their names appearing in the official softball directory. Both of these lists are mailed to all member schools. In circumstances in which registered officials are not available, permission to use non-registered officials must be received from the CHSAA. The CHSAA office and members of the CHSSUA stand ready to aid you in obtaining competent officials for your games. Both organizations are also always on the alert for new officials. **If you have a high school student in the senior class, who expresses an interest in officiating and who appears to have the desirable qualifications, encourage him or her to become a registered official by calling Mike Book or Monica Tillman at the CHSAA Officials Office 303-364-1337.**

[OFFICIALS PAY LINK](#)

SOFTBALL: Varsity (2 or 3 umpires) \$90.00 Sub-varsity (2 umpires) \$65.00

MILEAGE - 50 cents per mile round trip, zip code to zip code. Exception see note 1. Note 1: The Confluence (except Campion); The 5280 (except Gilpin County); The Colorado 7 (except Conifer,

Fort Lupton, Fort Morgan, Weld Central); The Jefferson County (except Evergreen), Denver, Continental, East Metro, Front Range (except Fort Collins, Loveland, Poudre and Rocky Mountain), Frontier (except Bennett, Clear Creek, Lake County, Middle Park and Platte Canyon), Metropolitan, and Centennial leagues and Broomfield, Denver Academy, and Denver Christian schools will not pay mileage between league cities, but will pay a mileage travel stipend of \$10 to each official between league cities per day of assignments. Colorado Springs schools will pay mileage travel stipend of \$10 per day of assignments to officials selected from the Colorado Springs Officials' Association. An official that is assigned to two or more contests at a given site on the same day shall be paid one travel stipend or reimbursement.

Only ONE driver will be paid the mileage reimbursement for each contest. It will be paid to the official on the crew who travels the farthest. Issues with multiple drivers must be solved between the officials and the assignor prior to the game. Crews are expected to carpool when traveling from area to area (for example from area 1 to area 2). In lieu of per diem, a rider fee of \$10 is paid to officials, non-drivers only, who are riding on trips of 70 miles or more one-way.

INDIVIDUAL MILEAGE BUFFER – Mileage will not be paid to an official in cases where the town borders between the official's whose town of residence is 20 miles or closer to and the host school if 20 miles or less. Full mileage (including first 20 miles) will be paid to officials who travel over 20 miles. This does not apply to the metro area officials described above that receive the \$10 travel stipend.

2024-2025 Round of 32/State Softball Umpires Playoff Voting Information

Three weeks prior to the end of the season look for e-mail notification regarding umpire voting instructions for the 2023 playoffs.

This is your opportunity to vote for the umpire you will see in the playoffs. Please take a moment to vote for the best umpires.

Neutrality Priority When Assigning Officials to in Post Season/Travel Cost an Impact

Every effort will be made to cut the travel cost when assigning officials in the post season though the priority of assigning will be to maintain neutrality. In general, if two teams are competing from different areas of the state, the officials will not be assigned from either of the areas of the competing teams. However, if the teams are from the same area, the officials could be assigned from the same area or any combination of areas. Below is the legend for area softball officials and a couple of examples:

Areas:

1 – Denver; 2 – Boulder/Longmont; 3 – Northern (Greeley/Fort Collins); 4 – Northeast; 5 – Colorado Springs (inc. Canon City); 6 – Pueblo (inc. southeastern Colorado); 7 – Western Slope; 8 – La Junta

Example 1:

If Pine Creek from Colorado Springs is playing Highlands Ranch from the metro Denver area, the officials will be selected from any of the other areas. Therefore a crew from Grand Junction, which is from the Western Slope, could be selected whether the game is played at Highlands Ranch or Pine Creek.

Some Exceptions to the Rule

If George Washington from Denver plays Fairview from Boulder, the officials could be selected from any area. If this is high profile semi-final game the three officials may be selected from three different areas or any combination of areas. This would be true if the two teams were from Durango and Fort Collins.

The concept of mixed crews is important in softball where the teams come from all areas of the state. In many cases, it is simpler to ensure neutrality by having umpires from two or three different areas of the state on a game. Following these guidelines, a school can determine on its own from which area playoff officials could be assigned.

CHSAA REGIONAL AND STATE TOURNAMENT INFORMATION

OUTSIDE COMPETITION

Players certified to participate as members of any high school sport may not compete on any other team or in any non-school activity or event in that sport during that sports season without written permission of the principal.

EXCEPTION: The sports season ends for a member of a high school athletic team on the day following the completion of his or her school's competition at the level at which the student competes.

PRACTICE ON REGIONAL AND STATE TOURNAMENT SITE

Schools will not be permitted to practice or host their regional at the state site complex they will be playing on.

ROSTERS AND GATELISTS

Each team is limited to an **23-player** roster during the regional and state tournaments with a **27 person limit** in the dugout area. Please submit your gatelist by using the link on the postseason page on CHSAANow of you may click [HERE](#). There is a place on the gatelist to link your schedule to MaxPreps, no need to submit results separately to the CHSAA office. **Please do not delay in submitting your gatelist, the deadline is Wednesday, October 11th. If you need to make changes or updates to your gatelist, please just resubmit. We will use the most current copy at the State Championship gate.**

SCHOOLS MUST ALSO SUBMIT A COPY OF THE TEAM GATE LIST TO THE REGIONAL DIRECTOR FOR ADMITTANCE PURPOSES.

An injury or illness of a player does not entitle a school to add an additional player to its roster after the roster is submitted for the first game of the tournament (regional or state). A player may be replaced on the roster after each level's tournament has been completed.

OFFICIAL BALL

Wilson Sporting Goods, through the CHSAA, will provide the tournament game balls for the regional/state tournaments. (Substitute softballs cannot be used) It is strongly encouraged for schools to use the A9011BSST official ball in the regular season.

HOME TEAM

The committee determined the higher seeded team on the Regional through the State Championship bracket game will be referred to as the "home team" and will have the last at bat. The "home team" will occupy the third base dugout.

DUGOUTS

The home team shall use the 3rd base dugout and the visitors the 1st base dugout.

LINE-UP CARDS

NOTE: The Coach is responsible for correctly proving accurate line-ups and lists of subs. (3-1-1, 4-1-2)

- A. On lines 1 through 9 or 10 (if using a DH/ flex and /or ED), list your starters.
- B. List the remaining substitutes on lines 9 or 10 through 18.
- C. The designated player and the player for whom she is batting need to be bracketed together.
- D. List the first initial, last name, jersey number, position and batting order of each starter.
- E. List the first initial, last name, jersey number, position and batting order of each eligible substitute.

OFFICIAL SCOREBOOK

The official SCOREBOOK shall be kept by an official scorekeeper designated by the tournament director. The official scorer's rulings on hits and errors shall be final.

INFIELD PRACTICE

A maximum 10-minute infield/outfield practice is available to each team prior to each regional and state game. The home team will warm-up first. If one team does not want to use the warm-up period, the other team is still limited to 10 minutes. Places to warm-up prior to game time will be designated by the tournament director.

REST BETWEEN GAMES

A thirty (30) minute break between games may be requested by the team that is playing back-to-back games. Warm-ups for the next game would then begin 30 minutes after the conclusion of the previous game.

FIELD MAINTENANCE

The 1st and 3rd base lines, batter's box and pitching area should be touched up between games. If media are allowed on the field, then an area must be designated in foul territory. That area becomes a dead ball area if it is occupied.

HUSTLE IN, HUSTLE OUT

The tournament format dictates the need for games to move at a fast, efficient pace. Umpires will be instructed to limit the time between innings. We ask the coaches to help us with this important aspect of the tournament. Fast-paced games played by hustling teams will do a great deal to promote softball as the wonderful spectator sport that it is.

At the beginning of each inning or when a pitcher enters the game in relief, no more than one minute may be used to deliver a maximum of five pitched balls to the catcher or other teammate.

NOTE: Each team should notify the umpire, prior to the start of the game, of its intention to use the courtesy runner option.

NATIONAL ANTHEM ,PLAYER INTRODUCTIONS & MUSIC

The National Anthem will be played prior to the first games of the day at the regional and state tournaments. (If the National Anthem is not available, the Pledge of Allegiance will be recited). For the championship games, players will be introduced as they take the field and come to bat. The visiting team will be introduced first in descending order from the line-up card (substitutes first) and shall line up along the first baseline, starting at home plate and filling in the space toward first base. The coaches will be introduced after the players and should also line up. Players will face the crowd as they stand along the line. The home team will be introduced in a like manner and will line up on the 3rd base line.

Music prior to the game and during the game is controlled by the home team.

POSTPONED GAMES

The tournament director and grounds crew shall decide whether the grounds and conditions are suitable for starting the game. Once the game starts, the umpires and grounds crew will determine whether conditions are suitable for play.

SUSPENDED GAMES

All games will be played to their conclusion in seven innings unless the run rule comes into effect or extra innings are needed. All suspended games at the regional and state level shall be completed from the point of suspension to the conclusion of the contest at the earliest time possible, including Sunday.

***Example 1:** At the end of the 5th inning, either team is leading 4-2. The game is called. **RESULT:** A suspended game.*

***Example 2:** At the end of the 5th inning, either team is leading 11-1. The game is called. **RESULT:** A complete game. The mercy rule applies.*

***Example 3:** At the end of the 5th inning, the visiting team is leading 1-0. In the top of the 6th inning, the visitors go up 2-0. In the bottom of the 6th, the bases are loaded with no one out. The game is called. **RESULT:** A suspended game.*

***Example 4:** At the end of the 5th inning, the home team is leading 1-0. In the top of the 6th inning, the visitors go up 2-1. In the bottom of the 6th, there are two out and no runners on base. The game is called. **RESULT:** A suspended game.*

INCLEMENT WEATHER

If inclement weather postpones or suspends regional or state tournament play, the first available date, including Sunday, will be used for continuation of play. The same time schedule will be in effect unless changed by the tournament director/committee.

UNIVERSAL TIE-BREAKING PROCEDURE

In all team sports where a league or conference tie breaker for league standings to determine state qualifiers has not been developed before the beginning of the competitive season, the following tie breaker will be used:

TIE BREAKER -- When a tie in league/conference standings exists after the conclusion of league play, the following criteria will be applied in order. In a three or more-way tie, if one team is determined to be a qualifier by applying one of the following tie breakers or if one of the three teams is eliminated by a tie breaker, the remaining teams would revert to the #1. Schools would revert back to the #1 tie breaker to resolve remaining ties.

1. Head to head competition.
2. Whoever beats the highest finishing team in the league, other than the tied teams, is the first qualifier among the tied teams.
3. Fewest points, runs, goals given up by the tied teams against the tied teams only.
4. Fewest points, runs, goals given up by the tied teams against all league opponents.
5. Fewest points, runs, goals given up by the tied teams against all opponents.
6. League vote.

ADMITTANCE

Passes will not be issued to players or team support staff. Players in uniform and those individuals listed by the school on the gate list (gate list instructions listed within this bulletin) will be admitted at the pass gate. No more than 23 players and 4 additional support staff members will be admitted without charge. The support staff will include coaches, trainers or team managers. Any additional individuals will require a ticket.

BANNERS

Vinyl school banners may be displayed at the regional and state tournaments upon approval of the director. Signs may not block the view of spectators. (Due to fire codes, paper banners or signs are not permitted.)

AWARDS

Regional champion trophies will be given to regional hosts to present to the regional winner at the conclusion of the regional tournament. Following the state championship games, a **runner-up trophy** will be presented to the second place team at home plate. Immediately following, the championship team will be presented the **state championship trophy** at home plate. **Please keep your teams on the field for the presentation.**

TRAINER

A trainer will be provided at state tournament sites. School trainers should be encouraged to attend regional and State Tournament contests in which their schools are playing. CHSAA trainers are hired for injury and emergency care, not to tape participants. Teams should make prior arrangements for taping of athletes.

UMPIRES/TOURNAMENT UMPIRES NOMINATION

REGIONALS/STATE: All umpires will be selected through a statewide vote. There is an expectation that all schools/coaches vote for the umpires who will work the playoffs. Additional information on the voting process will be forwarded to schools in late September.

PLAYOFF HOST RESPONSIBILITIES

Hosting CHSAA playoff events correctly is a major responsibility. The hard work and conscientious efforts of the site host is greatly appreciated by not only the CHSAA administrative staff but also all the schools, participants and fans at these events.

While at times, hosting events is an addition to your already full schedule, it does provide opportunities for your school and teams.

Hosting playoff events at your school provides for the following:

1. An opportunity to put your school at center stage.
2. An opportunity to display your administrative style and competence.
3. Allows your teams to maintain a normal routine prior to the contests by staying at their own homes.
4. Allows your fans to maintain a normal routine by not having to travel and incur the cost associated with this travel.
5. There may even be a competitive advantage to playing at a familiar site with no travel.
6. Hosting can be financially attractive, if for no other reason than for concessions sales and no travel expense for the host school.
7. Gives your school an opportunity to build a program.

FINANCIAL INFORMATION

[New playoff financial reporting requirements are in place for the 2024-2025 playoffs](#)

In a head-to-head game, if the host makes \$1,000 or more in net income from that game (revenue minus expenses), then 25% of the net income gets paid to the visiting team.

1. If there is a positive net income of \$1,000+ from the game, then a simplified T&PF form will be sent from the host to the visiting school to report the amount that will be paid to the visiting school.
2. CHSAA will share a form to complete, but the form will not be administered by CHSAA and schools will be required to submit payments to each other on their own.
3. No visiting team travel reimbursements will be paid and no percentage of the gate will be paid to CHSAA.

CHSAA will set the maximum ticket prices for the playoffs that must be followed by the schools. If a host distributes free tickets, this needs to be made equitable to the visiting team. For example, if a host school lets students in for free to a game, then the visiting team students should be allowed in free as well.

	General Admission	Students K-12 & Senior Citizens	Reserved
SOFTBALL			
3A/4A/5A Round of 32 (Regionals)	\$8.00	\$5.00	-----
State	\$12.00	\$9.00	-----

3A ROUND OF 32 HOST SITE CRITERIA - A 3A school *may choose* any one of the options below:

- **Tier 1 – Recreational City/Parks Complex** – A complex that follows the bulletin playoff host responsibilities criteria and is approved by the CHSAA Office.
- **Tier 2 – School District Complex** – A complex that follows the bulletin playoff host responsibilities criteria and is approved by the CHSAA Office.
- **Tier 3 – School Complex** – A complex that meets the criteria of a sports complex and follows bulletin playoff host responsibilities criteria and is in close proximity and is approved by the CHSAA Office.

4A/5A ROUND OF 32 HOST SITE CRITERIA

- **Tier 1 – Recreational City/Parks Complex** – A complex that follows the bulletin playoff host responsibilities criteria and is approved by the CHSAA Office.
- **Tier 2 – School District Complex** – A complex that follows the bulletin playoff host responsibilities criteria and is approved by the CHSAA Office.
- **Tier 3 – School Complex** – A complex that meets the criteria of a sports complex and follows bulletin playoff host responsibilities criteria and is in close proximity and is approved by the CHSAA Office will be considered at a final resort.

Host schools must begin at Tier 1 or use the single field two day option, if not accessible then move to Tier 2, if no School District Complex is available, move to Tier 3. Schools must follow the criteria written by the softball committee in order to be named a Regional Host Site.

4A/5A ROUND OF 32 HOST SITE RESPONSIBILITIES AND CRITERIA

The following criteria must be met in order to host a 4A or 5A Regional Tournament.

- 4A/5A Single field two-day format option for hosting regional
- The site must be able to charge a gate admission
- Media boxes must be provided and outlined on field in foul territory
- Restrooms must be available and accessible
- Game Balls: 1 dozen game balls will be provided to each host site by the CHSAA and 1 dozen balls will be provided by the host school
- The outfield fence on both fields should be set at the NFHS recommended 200-220 ft. (Exceptions can be made if necessary, CHSAA Office approval required)
- Game times for Regional Tournaments: 10:00; 12:15; and 2:30.

ROUND OF 32 SCORE REPORTING

- **Host site round of 32 director must update MaxPreps OR text Assistant Commissioner John Sullivan 720-427-7726 scores following each game.**

PAIRING COMMITTEE RESPONSIBILITIES

PAIRING COMMITTEE RESPONSIBILITIES:

The CHSAA Tournament Committee is charged with establishing the fairest competition for the schools and student participants in Colorado. Individual members represent, not a specific school, classification or geographic areas, but all the schools and their students. All viewpoints within the committee should be voiced and discussed, but the majority shall rule. The strength and integrity of the committee rests with each of its members accepting the will of the majority and not communicating individual opinions following the meeting.

Once the pairing committee has completed the bracket, the CHSAA has established the game times for each classification. These times are listed on the playoff brackets contained in this Bulletin. The final (16) 3A, 4A and 5A state qualifying teams will be re-seeded for the state tournament.

Note: The Class 3A/4A/5A State Tournament will be paired on Monday following the round of 32.

STATE SOFTBALL BRACKET PAIRING – 3A, 4A, 5A

Following the conclusion of the Round of 32 Tournaments, the State Tournament Bracket seeding will be determined by the committee through assigning teams on the bracket based on the following criteria:

- Regional Champions will be seeded on the State Tournament Bracket as #1-8.
- If the top (8) eight seeded teams win their Regional Tournament, no changes would be made to the original bracket for teams listed as numbers 1 - 8.
- State qualifiers from each region should not be paired together during first round play.
- If an upset occurred that involved a top (8) eight seeded team, the upset would create the original top (8) seeded team to be placed at a seed from number 9-12.

A. Class 3A (1-658)				
<u>3A Denver Metro (4)</u>	<u>3A Tri Peaks I (5)</u>	<u>3A Patriot (10)</u>	<u>3A Lower Platte (4)</u>	<u>3A/4A Frontier (9)</u>
Forge Christian	Alamosa	Brush	Burlington	Jefferson
Jefferson Academy	Lamar	Eaton	Holyoke	Bennett
Peak to Peak	Rocky Ford	Lyons	Limon	Englewood
The Academy	Wiley-Eads	Platte Valley	Wray	Middle Park
	La Junta	Resurrection Chr.		Arvada
<u>3A/4A Longs Peak (9)</u>		Sterling		Platte Canyon
Greeley Central	<u>3A Tri Peaks II (4)</u>	Strasburg	<u>3A/4A CSML North (6)</u>	Alameda
Wellington	Dolores Huerta Prep	University	Classical Academy	Sheridan (JV only)
	Woodland Park	Valley	Mitchell	
<u>3A Western Slope (7)</u>	James Irwin	Weld Central	Sand Creek	
Aspen	Florence			<u>3A/4A Denver Prep (7)</u>
Basalt				Denver West
Cedaredge	<u>3A/4A Colorado (5)</u>		<u>3A/4A CSML South (5)</u>	Rocky Mountain SMART
Delta	Skyview		Harrison (JV)	John F. Kennedy
Gunnison				Abraham Lincoln
Meeker	<u>3A/4A/5A Granite Peaks (13)</u>			
Montezuma-Cortez	Skyline			

Round of 32 Qualification: For 3A, a minimum of 17 games must be played for postseason eligibility. Thirty-two (32) teams advance to the regional bracket through league play and RPI/MaxPreps. All league champions are automatic qualifiers. In order to qualify as a league, the league must have a minimum of five teams. Schools in a multiple-class league may earn an automatic qualifier for their classification only if they win the league outright. This will mean that if a 3A or 5A school wins the multi-class league title, any 4A school in that league can only qualify for the 4A regionals through RPI/MaxPreps.

The top 32 teams in the classification based on the final RPI/MaxPreps rankings will qualify for the post-season bracket. Each conference champion will automatically be placed on the playoff bracket. Conference champions are determined by the conference Bylaws or policies. If a conference champion is not ranked in the top 32 based on the final RPI/MaxPreps ranking, they will replace the lowest-ranked team that is not a conference champion in the top 32.

Round of 32 Seeding: The regionals will be seeded by a committee of administrators appointed by the CHSAA assistant commissioner responsible for softball and will utilize the following process: All qualifying teams will be ranked using RPI and MaxPreps, with each holding equal value. The eight teams that rank highest by seeding criteria will host the round of 32 tournaments. The remaining teams will be placed on the bracket, using the same system as above, avoiding first round league match-up. The committee may elect to move the bottom eight teams for geographical purposes.

3A State Qualification: The round of 32 teams shall play a single elimination regional tournament to determine the state tournament qualifiers.

3A State Finals: The 16 state qualifiers will be reseeded 1-16 based on the above criteria and play a single elimination tournament. Winners of each round of 32 site will be seeded 1-8, 2nd place teams from each site will be seeded 9-16 based on the above criteria.

3A Round of 32 Brackets



--	--	--	--	--	--	--

Site Game Times - Game 1 will be played at 10:00am; Game 2 at 12:15 pm; Game 3 at 2:30 pm

B. Class 4A Leagues (659-1418)			
<u>3A/4A Colorado (5)</u>	<u>3A/4A Longs Peak (9)</u>	<u>3A/4A CSML South (5)</u>	<u>4A South Central (5)</u>
Thornton	Mountain View	Canon City	Pueblo Centennial
Aurora Central	Northridge	Coronado	Pueblo Central
Adams City	Roosevelt	Mesa Ridge	Pueblo County
Gateway	Severance	Palmer	Pueblo East
	Thompson Valley	Widefield	Pueblo South
<u>4A/5A Centennial (8)</u>	Timnath		
Mullen	Berthoud	<u>3A/4A CSML North (6)</u>	<u>4A Pikes Peak (6)</u>
		Elizabeth	Air Academy
<u>4A/5A Continental (11)</u>	<u>4A/5A Northern (7)</u>	Falcon	Cheyenne Mountain
Ponderosa	Windsor	Sierra	Discovery Canyon
			Lewis-Palmer
	<u>3A/4A/5A Granite Peaks (13)</u>	<u>3A/4A Denver Prep (7)</u>	Palmer Ridge
<u>4A Jefferson Co. (9)</u>	Holy Family	Montbello	Lutheran
Dakota Ridge	Longmont	Hinkley	
Conifer	Mead	G. Washington	<u>4A/5A Southwestern (6)</u>
D'Evelyn	Silver Creek	Thomas Jefferson	Durango
Evergreen	Frederick		Montrose
Golden	Niwot	<u>4A/5A Rocky Mountain (7)</u>	Palisade
Green Mountain		Westminster	
Pomona	<u>3A/4A Frontier (9)</u>	Northglenn	<u>4A Western Slope (3)</u>
Standley Lake	Centaurus		Eagle Valley
Wheat Ridge	Fort Lupton		Rifle
			Battle Mountain

Round of 32 Qualification: For 4A, a minimum of 19 games must be played for postseason eligibility. Thirty-two (32) teams advance to the regional bracket through league play and RPI/MaxPreps. All league champions are automatic qualifiers. In order to qualify as a league, the league must have a minimum of five teams.

Schools in a multiple-class league may earn an automatic qualifier for their classification only if they win the league outright. This will mean that if a 3A or 5A school wins the multi-class league title, any 4A school in that league can only qualify for the 4A regionals through RPI.

The top 32 teams in the classification based on the final RPI/MaxPreps rankings will qualify for the post-season bracket. Each conference champion will automatically be placed on the playoff bracket. Conference champions are determined by the conference Bylaws or policies. If a conference champion is not ranked in the top 32 based on the final RPI/MaxPreps ranking, they will replace the lowest-ranked team that is not a conference champion in the top 32.

Round of 32 Seeding: The regionals will be seeded by a committee of administrators appointed by the CHSAA assistant commissioner responsible for softball and will utilize the following process:

All qualifying teams will be ranked using RPI and MaxPreps, with each holding equal value. The eight teams that rank highest by seeding criteria will host the round of 32 tournaments. The remaining teams will be placed on the bracket, using the same system as above, avoiding first-round league match-up. The committee may elect to move the bottom eight teams for geographical purposes.

4A State Qualification: The round of 32 teams shall play a modified double-elimination regional tournament to determine the state qualifiers.

4A State Finals: The 16 state qualifiers will be reseeded 1-16 based on the above criteria and play a single elimination tournament. Winners of each round of 32 site will be seeded 1-8, 2nd place teams from each site will be seeded 9-16 based on the above criteria.

4A Regional Brackets

Site 1				Site 5		
1				3		
Game 1				Game 1		
32				30		
16	Game 4	State Qual.		14	Game 4	State Qual.
Game 2				Game 2		
17				19		
	SF Loser				SF Loser	
L Game 1	Game 5			L Game 1	Game 5	
Game 3		State Qual.		Game 3		State Qual.
L Game 2				L Game 2		
Site 2				Site 6		
8				6		
Game 1				Game 1		
25				27		
9	Game 4	State Qual.		11	Game 4	State Qual.
Game 2				Game 2		
24				22		
	SF Loser				SF Loser	
L Game 1	Game 5			L Game 1	Game 5	
Game 3		State Qual.		Game 3		State Qual.
L Game 2				L Game 2		
Site 3				Site 7		
5				7		
Game 1				Game 1		
28				26		
12	Game 4	State Qual.		10	Game 4	State Qual.
Game 2				Game 2		
21				23		
	SF Loser				SF Loser	
L Game 1	Game 5			L Game 1	Game 5	
Game 3		State Qual.		Game 3		State Qual.
L Game 2				L Game 2		
Site 4				Site 8		
4				2		
Game 1				Game 1		
29				31		
13	Game 4	State Qual.		15	Game 4	State Qual.
Game 2				Game 2		
20				18		
	SF Loser				SF Loser	
L Game 1	Game 5			L Game 1	Game 5	
Game 3		State Qual.		Game 3		State Qual.
L Game 2				L Game 2		

Round of 32 Game Times – To be determined by site host and communicated out to schools. For 2 day tournaments, Day 1 games should be games 1-3, Day 2 games would be games 4-5.

C. Class 5A Leagues (1419+)			
<u>4A/5A Centennial (8)</u>	<u>4A/5A Continental (11)</u>	<u>5A Denver Prep (6)</u>	
Arapahoe	Castle View	Denver East	
Cherokee Trail	Chaparral	Rangeview	
Cherry Creek	Douglas County	Denver South	
Eaglecrest	Heritage	Vista PEAK	
Grandview	Highlands Ranch	Denver North	
Smoky Hill	Legend	Northfield	
	Mountain Vista		
	Regis Jesuit	<u>4A/5A Northern (7)</u>	
<u>5A CSML (6)</u>	Rock Canyon	Greeley West	
Doherty	ThunderRidge	Fort Collins	
Ftn-Ft Carson		Fossil Ridge	
Liberty	<u>5A Jefferson Co. (7)</u>	Loveland	
Rampart	Arvada West	Poudre	
Vista Ridge	Bear Creek	Rocky Mountain	
Pine Creek	Chatfield		
Pueblo West	Columbine	<u>5A Independent</u>	
	Lakewood	Overland	
<u>3A/4A/5A Granite Peaks (13)</u>	Ralston Valley		
Broomfield	Valor Christian	<u>4A/5A Rocky Mountain (7)</u>	
Erie		Brighton	
Fairview	<u>4A/5A Southwestern (6)</u>	Mountain Range	
Horizon	Fruita Monument	Boulder	
Legacy	Central Gr. Jct.	Prairie View	
Monarch	Grand Junction	Riverdale Ridge	

Round of 32 Qualification: For 5A, a minimum of 19 games must be played for postseason eligibility. Thirty-two (32) teams advance to the regional bracket through league play and RPI/MaxPreps. All league champions are automatic qualifiers. In order to qualify as a league, the league must have a minimum of five teams. Schools in a multiple-class league may earn an automatic qualifier for their classification only if they win the league outright. This will mean that if a 3A or 5A school wins the multi-class league title, any 4A school in that league can only qualify for the 4A regionals through RPI.

The top 32 teams in the classification based on the final RPI/MaxPreps rankings will qualify for the post-season bracket. Each conference champion will automatically be placed on the playoff bracket. Conference champions are determined by the conference Bylaws or policies. If a conference champion is not ranked in the top 32 based on the final RPI/MaxPreps ranking, they will replace the lowest-ranked team that is not a conference champion in the top 32.

Round of 32 Seeding: The regionals will be seeded by a committee of administrators appointed by the CHSAA assistant commissioner responsible for softball and will utilize the following process: All qualifying teams will be ranked using RPI and MaxPreps, with each holding equal value. The eight teams that rank highest by seeding criteria will host the round of 32 tournaments. The remaining teams will be placed on the bracket, using the same system as above, avoiding first-round league match-up. The committee may elect to move the bottom eight teams for geographical purposes.

5A State Qualification: The round of 32 teams shall play a modified double-elimination regional tournament to determine the state qualifiers.

5A State Finals: The 16 state qualifiers will be reseeded 1-16 based on the above criteria and play a single elimination tournament. Winners of each round of 32 site will be seeded 1-8, 2nd place teams from each site will be seeded 9-16 based on the above criteria.

5A Regional Brackets

Site 1			Site 5		
1			3		
Game 1			Game 1		
32			30		
16	Game 4	State Qual.	14	Game 4	State Qual.
Game 2			Game 2		
17			19		
	SF Loser			SF Loser	
L Game 1	Game 5		L Game 1	Game 5	
Game 3		State Qual.	Game 3		State Qual.
L Game 2			L Game 2		
Site 2			Site 6		
8			6		
Game 1			Game 1		
25			27		
9	Game 4	State Qual.	11	Game 4	State Qual.
Game 2			Game 2		
24			22		
	SF Loser			SF Loser	
L Game 1	Game 5		L Game 1	Game 5	
Game 3		State Qual.	Game 3		State Qual.
L Game 2			L Game 2		

Site 3				Site 7		
5				7		
Game 1				Game 1		
28				26		
12	Game 4	State Qual.		10	Game 4	State Qual.
Game 2				Game 2		
21				23		
	SF Loser				SF Loser	
L Game 1	Game 5			L Game 1	Game 5	
Game 3		State Qual.		Game 3		State Qual.
L Game 2				L Game 2		
Site 4				Site 8		
4				2		
Game 1				Game 1		
29				31		
13	Game 4	State Qual.		15	Game 4	State Qual.
Game 2				Game 2		
20				18		
	SF Loser				SF Loser	
L Game 1	Game 5			L Game 1	Game 5	
Game 3		State Qual.		Game 3		State Qual.
L Game 2				L Game 2		

Round of 32 Game Times – To be determined by site host and communicated out to schools. For 2 day tournaments, Day 1 games should be games 1-3, Day 2 games would be games 4-5.

3A-5A SOFTBALL STATE BRACKET

Friday	Friday	Saturday	Saturday	
Seed #				
1				
16				
8				
9				
4				
13				
5				
12				
3				
14				
6				
11				
7				
10				
2				
15				

CHSAA SEASON POLICIES

POLICIES (ALL CLASSES):

- A. National Federation uniform rules are in effect throughout the regular season, along with the regional and state tournaments.
- B. The 10-run rule (15 after 3, 12 after 4) will be in effect for all tournament games during the regular season, the regional tournament, and the state tournament.

If a team has a 10-run lead, **following the completion of 5 innings**, no new inning will begin and the game will be declared official. (Example: Team A - 17 runs, Team B - 2 runs, 3rd inning, game over. If the home team is behind then the inning must be completed).

If a team has a 10-run lead and the **losing team has batted 5 times** the game will be declared official.

POST SEASON:

- A. The 4A, 5A round of 32 tournaments are a modified double elimination. **The state tournament for the 3A/4A and 5A classifications is a single elimination tournament. Class 3A will qualify 32 teams on Saturday, October 14th and 4A/5A have the option of qualifying 32 teams over two days, Friday, October 13th and Saturday, October 14th to the regional with 16 advancing to the state tournament.** The round of 32 brackets will be seeded by the tournament seeding committee on **Monday, October 14, 2024**. The 16 teams qualifying for the state tournament in each classification will be re-seeded using the seeding criteria listed in the Softball Bulletin on **Monday, October 21, 2024**, for the state tournament. NOTE: Those schools that play host to the Round of 32 Tournaments will have the financial obligations including (but not limited to): Umpires; rental of facilities; site workers; One (1) dozen Wilson A9011 game balls; security and insurance.
- B. The Board of Directors have requested that every regional site, carry insurance coverage provided by the CHSAA office. Therefore, if you are hosting (fields are off site from your school) we will be requesting the location and contact for the additional insured for the certification of insurance. We will need this information immediately after a location is determined. This certificate of insurance will be processed through our office and will be kept on file at the CHSAA office. Just to be clear this is additional insurance that the CHSAA will be providing to cover the regional site.
- C. The seeding committee will be made up of one (1) administrator from each district (3A) or League (4A/5A). The administrator shall be selected by the District/League president and nominated to the CHSAA office for approval. The softball committee also determined the higher seeded team on the Round of 32 through the State Championship bracket game will be referred to as the "home team" and will have the last at bat. The "home team" will occupy the third base dugout.
- D. During the Round of 32 and State Tournaments – neither team (home/visitors) can play music during pre-game, NO walk-up music is allowed for Round or State Tournament games. All music played during pre-game will be controlled by the host site and must show a copyright supported by the school administration or NFHS.

- E. Warm-up areas at the State Tournament (Aurora Sports Park) – All team warm-ups prior to the 12:15 first round games and the 2:30 quarterfinal games will take place on fields marked 40-45. No team warm-ups for the 12:15 first round games and the 2:30 quarterfinal games will take place in the complex in the areas behind the outfield fence nor greenbelt areas.
- F. Each team qualifying for the State Tournament is required to have an Official Scorekeeper (home/visitor) for each game. The home and visitor official scorekeeper will be seated in the press box for each game and their name placed on the team's gate list for entrance into the tournament.
- G. All games will be played to their conclusion in seven innings unless the run rule comes into effect or extra innings are needed. All suspended games at the regional and state level shall be completed from the point of suspension to the conclusion of the contest at the earliest time possible, including Sunday.

COLORADO STATE RULE ADOPTIONS

Softball

Updated 8.2024

1-2-1 Note: By state association adoption, a double first base is required. The base shall be a one- or two-piece unit, 15 inches by 30 inches and manufactured to be of equal height. The base in foul territory shall be a color other than white. (8-10)

4-2-3 Note: Speed up rule is in place during the regular and post-season play (**10 runs after 5 innings; 15-runs after 3 innings and 12-runs after 4 innings**).

4-4-1 Protests are not allowed.

5-2-1b The umpire considers the weather or ground conditions unfit for play. Note: After 30 minutes, the umpire may declare the game suspended. The game will resume and continue from the point of interruption. *see item e for additional note.

The Colorado High School Softball Umpires Association will allow commemorative or memorial patches/stickers/decals, to include but not be limited to special causes and/or military support that will be uniformly placed, not to exceed 4 square inches, to be worn on jerseys in an appropriate and dignified manner without compromising the integrity of the uniform. The Association will also allow uniforms to be specially designed for athletes and coaches that support the above causes, as long as the uniform does not violate any other rules related to numbers, lettering, etc. The uniforms do not have to be in team colors, so long as all coaching uniforms match and all athlete uniforms match. Further clarification states that any lettering or emblems on uniforms must pertain to one or more of the following: school name, school nickname, individuals name, the sport, drug use prevention, a specific cause, sportsmanship, ethics or integrity or be of a patriotic nature and provided it does not violate the rules of the sport in regard to other guidelines.

FURTHER INFORMATION ON STATE ADOPTIONS FROM THE COMMITTEE

- A. End of regular season – The committee recommends that the regular season schedule will reflect that all games should be completed by Thursday prior to the “End of the Regular Season” date listed on the CHSAA Sports Calendar. This will enable teams the opportunity to complete regular season scheduled play with postponements due to inclement weather.
- B. The committee recommended the following state association adoptions:
 - a. The International Tie Breaker may be implemented, at the site director’s discretion, for sub-varsity tournaments after the 8th inning or after the established time limit has expired. *Note: This recommendation is for sub-varsity tournament use only.*
 - b. Once the game begins, **the umpire along with the site manager** will determine if the weather or ground conditions are unfit/fit for play. After 30 minutes, the umpire may declare the game suspended. The suspended game will resume and continue from the point of interruption.

Miscellaneous

NFHS DESIGNATED PLAYER (DP) / FLEX PLAYER (Flex) RULE EXPLANATION

1. A DP does not have to be used.	7. If the starting DP plays DEFENSE for the FLEX PLAYER, the FLEX PLAYER has LEFT the game and the team continues with NINE PLAYERS.
2. If used it MUST be NOTED on the STARTING LINE-UP.	8. The FLEX PLAYER can bat, or run, but only for the ORIGINAL DP, therefore, the FLEX PLAYER and the DP can NEVER be on OFFENSE SIMULTANEOUSLY.
3. A team using the DP starts the game with 10 PLAYERS on the LINE-UP CARD, but could end the game with 9 or 10.	9. When the FLEX PLAYER bats for the DP, the FLEX PLAYER is moved from the 10 th spot in the LINE-UP to the BATTING ORDER POSITION of the ORIGINAL DP. The DP is considered to have left the game, but the FLEX PLAYER has not.
4. The STARTING DP can play DEFENSE for any of the OTHER 9 PLAYERS IN THE LINE-UP.	10. If the DP RE-ENTERS the game, she MUST do so in her ORIGINAL BATTING ORDER POSITION and the FLEX PLAYER could: (A) move back to the No. 10 position in the line-up, or (B) leaves the game. If the FLEX PLAYER moves back to the 10 th POSITION in the LINE-UP, the team resumes the game with TEN (10) PLAYERS and the FLEX PLAYER has never left the game.
5. If the starting DP plays DEFENSE for a PLAYER serves as a “ TEMPORARY DP ” during the period, as she BATS ONLY.	11. A SUBSTITUTE can enter the game for either the DP or the FLEX PLAYER. The SUBSTITUTE can enter on defense, or as a PINCH HITTER or PINCH RUNNER.
6. The player listed in the 10 th POSITION in the LINE-UP will play DEFENSE ONLY and will be called a (FLEX PLAYER). The DP and the FLEX PLAYER can play DEFENSE <i>SIMULTANEOUSLY</i> .	

REMINDERS:

1. The DP can never be on DEFENSE ONLY.
2. The FLEX PLAYER can never be on OFFENSE ONLY.
3. The DP and FLEX PLAYER can never be on offense at the same time.
4. The STARTER and the SUBSTITUTE cannot be in the game at the same time.
5. The STARTING DP and FLEX PLAYER have one reentry just as any other player.

Reference 3-1-1 PENALTY and 3-3-6 for further action.

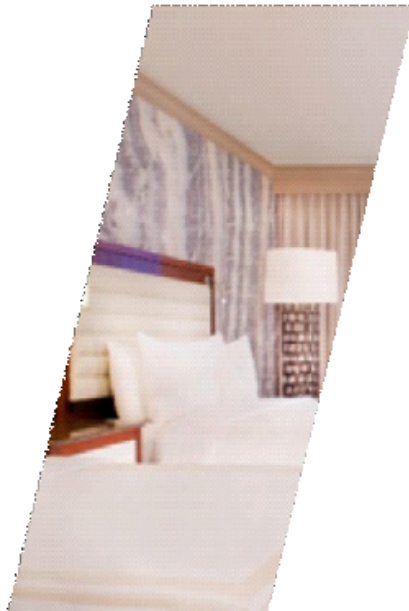
SAME HOTELS: NEW RATE FLYER/LINKS SHOULD BE AVAILABLE MID JULY

The Denver Gateway Park Marriott hotels and CHSAA Presents State Softball at Aurora Sports Park

State Softball - Aurora Sports Park October 20 - 22, 2023

- Aloft Denver Airport at Gateway Park \$119
- Courtyard Denver Airport at Gateway Park \$129
- Denver Airport Marriott at Gateway Park \$139

With a 2-week cut-off, 48-hour cancellation, Grab & Go breakfast, discounted rate 2 days pre/post, rooms with 2 queen beds



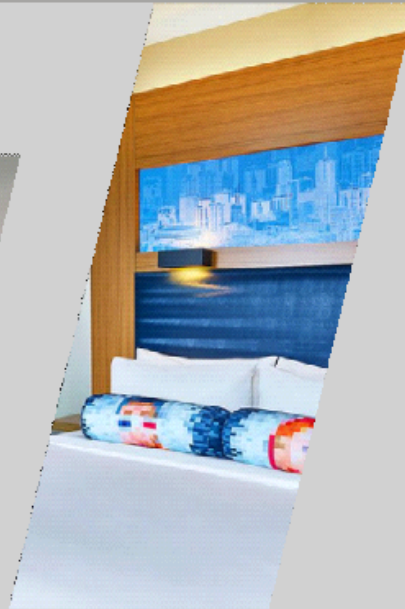
16455 E 40th Cir,
Aurora, CO 80011

[Click here to book for the Denver Airport Marriott at Gateway Park!](#)



4343 Airport Way,
Denver, CO 80239

[Click here to book for the Courtyard Denver Airport at Gateway Park!](#)



16470 E 40th Cir,
Aurora, CO 80011

[Click here to book for the Aloft Denver Airport at Gateway Park!](#)

Use the links below each hotel name to book!



Have your Roster and Team Photo ready for submission to the digital program. Teams are welcome to submit early, however only the state qualifiers will be featured in the digital program.

Please submit your roster and softball team photo [no later than TUESDAY OCTOBER 22, 2024](#): submit@kukulskipublishing.com

Email Subject title: should include the Name of the school/ CHSAA softball program

Past and present CHSAA State Softball merchandise can always be ordered online at: <https://store.kukulskibrothers.com/collections/chsaa-softball>

The screenshot shows the Kukulski Brothers website interface. At the top, there is a search bar with the placeholder text "What are you looking for?". Below the search bar is a navigation menu with links for Home, Products, Programs, Banners, Regionals, About Us, and Returns. The main content area is titled "CHSAA - Softball" and includes a breadcrumb trail "Home > CHSAA - Softball". A "Sort by" dropdown menu is set to "Newest to Oldest". Two product listings are visible:

- 2021 CHSAA State Championship Softball Patch**: A gold octagonal patch with "CHSAA" at the top, "20" and "21" on the sides, and "STATE CHAMPIONSHIPS" at the bottom. Price: \$25.00.
- 2021-22 CHSAA State Championships Lapel Pin**: A circular lapel pin with a mountain range background, "CHSAA" at the top, "COLORADO" in the middle, "STATE CHAMPIONSHIPS" in large letters, and "2021" and "2022" at the bottom. Price: \$8.00.

BARRY WALLACE AT WALLACE PHOTOGRAPHY WILL BE ON SITE FOR STATE SOFTBALL

WE WILL BE
PROVIDING



PANORAMIC STYLE
8X24 PRINTS LIKE
THESE SAMPLES

DISCOUNTED
PRICE ONLY

\$30



TEAMS MAY OPT FOR
TRADITIONAL STYLE
PHOTOS AS WELL!!



CHSAA OFFICIAL
PHOTOGRAPHER 775 230 4320

2024 CHSAA STATE SOFTBALL

3A-5A

Championships



FRIDAY, OCT 25

**3A/4A/5A FIRST ROUND 10:00AM,
12:15PM QUARTERFINALS: 2:30PM**

SATURDAY, OCT 26

**3A/4A/5A SEMIFINALS BEGIN AT 10:00AM,
CHAMPIONSHIP GAMES 3A: 1:00PM & 4A/5A 1:30 PM**

ALL TICKETS ARE SOLD ONLINE GOFAN.

USE QR CODE: K12/SENIORS \$9

ADULTS: \$12



AURORA SPORTS PARK

18601 E. AURORA SPORTS PARK DRIVE, 80011

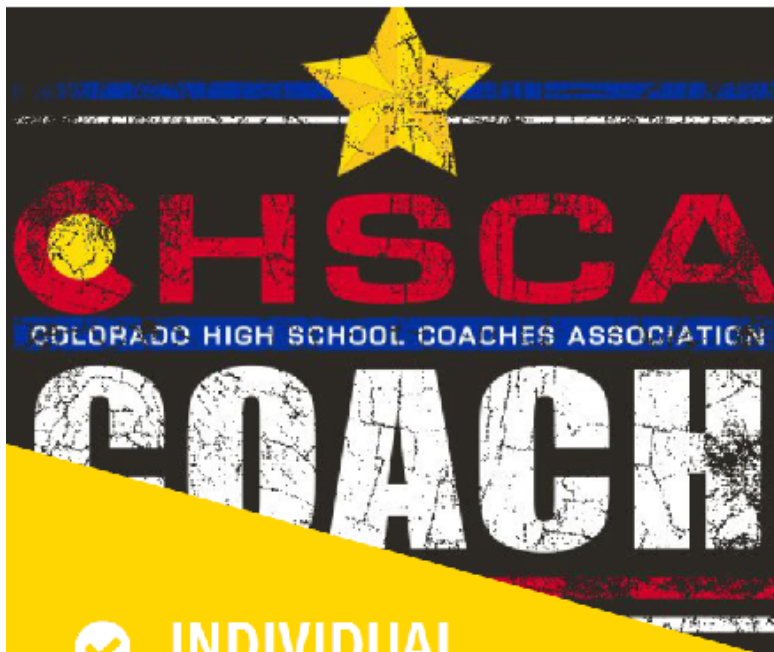
<https://gofan.co/app/school/CHSAA>

DIRECTIONS to Aurora Sports Park:

FROM I-70 EAST: I-70 East to Tower Road. Tower Road South to Colfax Avenue. Colfax Avenue East to Dunkirk and Aurora Sports Park .

FROM I-70 WEST: I-70 West to Colfax Avenue. Colfax Avenue West to Dunkirk and Aurora Sports Park.

COLORADO HIGH SCHOOL COACHES ASSOCIATION



✔ **INDIVIDUAL
COACH SIGN UPS**
www.colohsca.org

✔ **SCHOOL BUNDLE-**
**AD's sign up ALL of
your coaches**

Bundle Link—
[https://colohsca.sportngin.com/
register/form/706862598](https://colohsca.sportngin.com/register/form/706862598)

*"Leadership and learning are
indispensable to each other." –
John F. Kennedy*

WHY JOIN?

It's **YOUR** professional organization

- 01 BENEFITS**
TWO Million dollar liability insurance, admission card to state tournament events, hospitalities, can nominate for all state and scholarships, CHSCA communications, and apply for Coaching training grants.
- 02 EDUCATION**
Coaching clinics, new coach trainings, online learning calls, coaching resources, leadership training, PLUS... we're working on more online learning opportunities!
- 03 ALL STATE GAMES**
We run the biggest and BEST All-State games in the state! Hosted by CSU Pueblo we bring together top senior athletes from across the entire state to compete. HEAD COACH must be a member to nominate a player for all state.
- 04 RECOGNITION**
Colorado Coaches Hall of Fame, Sport Coach of the Year Awards, Longevity Awards, Achievement Awards, Special Recognition Awards, Nominations to National Coach of the Year Awards.

**AWESOME SPORT CLINICS
2023-2024**

The COLORADO HIGH SCHOOL COACHES ASSOCIATION

is proud to announce the

68th Annual

ALL STATE GAMES

Softball

June 10-12, 2024

at Colorado State University Pueblo



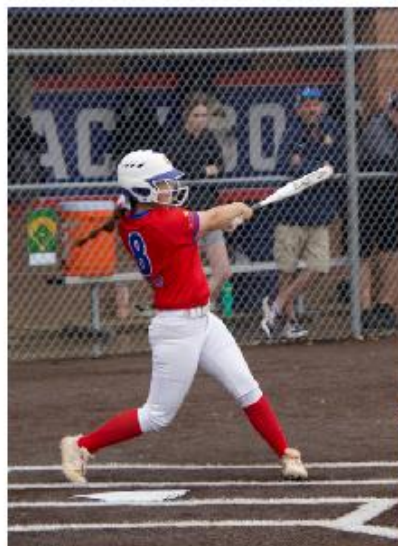
This is a first class event to cap off your outstanding seniors' high school careers and to honor top coaches from across the state of Colorado.

1. Players and coaches are nominated and selected by CHSCA softball MEMBER coaches.

Each league has the opportunity to nominate up to **nine senior players** and the top coach (must be CHSCA member) through a league representative.

2. All nominations must be submitted October 8-27, 2023 via the CHSCA All State Games website. Go to www.CHSCAAllStateGames.org under the ALL STATE GAMES/ SOFTBALL tab.

Note: At your league meetings, be ready with your player nominations INCLUDING CONTACT EMAIL AND PHONE then DESIGNATE A CHSCA member to submit for your league.



**** Register today to get all the benefits of your CHSCA membership~ including the opportunity for you and your players to participate in the All State Games (and to ensure that your league can nominate players and so that you can vote to select the teams).**

www.colohsca.org