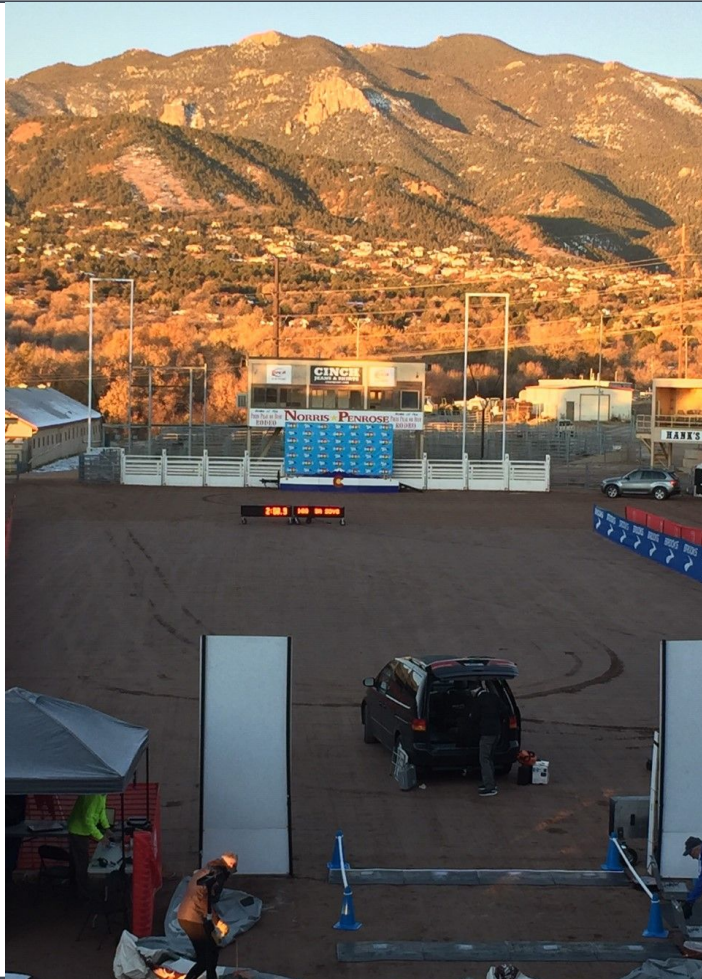


2025 REGIONAL QUALIFYING MEETS



GAMES COMMITTEE AND OFFICIALS

- All regional meets shall have a games committee comprised of non-coaches.
- All regional meets are REQUIRED to have 4 certified officials.
- **THE MEET DIRECTOR SHALL NOT SERVE AS A CERTIFIED OFFICIAL AT REGIONALS.**
- Jury of Appeals - Referee



OFFICIAL'S RESPONSIBILITIES

Arrive in plenty of time for completing pre-meet duties and meetings.

Have a meeting with all coaches and officials prior to competition:

- Introduce the officiating crew and the assignment for each member.
- Share information from your meeting with the head timing system operator.
 - What is the primary system, the back up system, etc.
 - Share that all settings on the timing system have been verified to operate under NFHS rules and CHSAA guidelines.
 - Where can coaches find results?
- Any other information that you think needs to be shared.
- Field any questions from the coaches.





STARTING LINE

- Starting box placement will be done by random draw per games committee. A separate random draw will be done for each race, **one for girls and one for boys.**
- Starting boxes should be 6ft in width. A minimum of 4.5 ft wide is acceptable. Box positions shall be numbered from left to right facing the running area per rule 8-1-4b
- Officials will determine how many athletes per row can fit comfortably within the width of the boxes. One box per team, **only members of that team** may occupy the box.





OFFICIAL'S RESPONSIBILITIES

The required certified officials include:

Starter and Assistant Starter: with the assistance of the referee will oversee the check-in of teams, uniform compliance, visually check all competitors bib numbers are placed correctly on the uniform top, share special circumstances, procedures and information pertaining to the course or the meet prior to the start. These three officials will administer the start with one official at the starting line, one official at the 100m mark in case of a recall, and one official that will start the race. Once the race has been started the referee will move to the finish line and the starter and assistant starter can begin to organize the next race.



COMPUTERIZED TRANSPONDERS/CHIPS

Chip timing **must** be used at all regionals. Bib-chips or shoe chips may be used. If using shoe chips **RUNNERS MUST WEAR A CHIP ON BOTH SHOES**. Refer to rule 8, section 3, article 3 & 4 of the National Federation Rule Book.

FinishLynx is also acceptable; it is an image-based system.





IMAGE-BASED TIMING SYSTEM

An image-based timing system may be used in addition to or in place of a chip timing system. An image-based timing system uses line-scan technology such as Finish Lynx. A video camera or I-Pad is **NOT** an image-based system per NFHS rules and should not be used to determine the official order of finish. While video is helpful in locating a non-read chip or misread chip, it is the decision of the referee and assistant referee to determine where to place a disputed finisher by looking at all available backups, including the referee's recording order, video recording, and consulting with the timing system operator.





UNIFORM REMINDERS AND CLARIFICATION WHEN CHECKING UNIFORMS AT THE REGIONAL MEET:

When checking uniforms at the regional meet:

The uniform top and/or bottom or one piece uniform may have **school name, school logo, school nickname** and/or **competitor's name**.

Any visible garment(s) worn underneath the uniform top and/or bottom is considered a foundation garment. **Foundation garments are not subject to logo/trademark/reference or color restrictions.**

All cross country team members must wear uniforms **clearly indicating, through predominant color, school logo and color combination** of all outer garments worn as a uniform, **that members are from the same team.**



CROSS COUNTRY TEAM UNIFORM COMPLIANCE

COLORADO GUIDELINES

- The front of the uniform top has the same predominant color and the same school name or logo.
- The back of the uniform top has the same predominant color and the same school name or logo.
- Uniform bottom has the same predominant color in the front and back.
- Side panels or side striping on the uniform top and bottom, whether they exist or not, should not be a factor in determining compliance. (**Side panels on the uniform top extend from under the arm to the bottom hem. Side panels on the uniform bottom extend from the side waistband to the bottom hem. Side panels wrapping to the front, or the back of the garment do not meet compliance unless all Cross Country team members are wearing them.**)



GAMES COMMITTEE RULES FOR ITEMS WORN IN EXCESS OF

THE REQUIRED SCHOOL UNIFORM FOR REGIONAL MEETS AND THE STATE

CHAMPIONSHIPS

Hair devices, hard or soft, may be worn to control hair. (headbands, hair clips, bobby pins, ribbons, barrettes, etc)

Decorative hair bows with no dimension greater than 3 inches may be worn in the hair.

Head coverings worn for religious reasons are not considered hair devices and must not be made of abrasive, hard or unyielding materials and fit securely or be fastened to the body and/or uniform to remain in a fixed position.





GAMES COMMITTEE RULES FOR ITEMS WORN IN EXCESS OF THE REQUIRED SCHOOL UNIFORM FOR REGIONAL MEETS AND THE STATE CHAMPIONSHIPS

Sunglasses may be worn by competitors.

Hats may be worn by competitors. They must be recognized athletic wear (no floppy hats or distracting ornamentation), must be used as intended (baseball caps with brims facing forward for sun-blocking).

Gloves may be worn by competitors.





PROVIDING AID

Host schools may provide a water station(s) on the course available to all competitors both during and after the race. When water stations are not provided, coaches may provide fluids for their team, if necessary, provided that doing so does not cause interference with other competitors or in a restricted area of the course.

*Providing fluids on the Cross-Country course in non-restricted areas is not considered an illegal aid.





OFFICIAL'S RESPONSIBILITIES

The required certified officials include:

Referee and Assistant Referee: shall make final decisions concerning situations and questions until all places have been determined and the results have been recorded and posted. While the referee is assisting with the start, the assistant referee should be at the finish line to coordinate with the timing system crew. Once the race has started the referee will move to the finish line. The referee and assistant referee will work together to record the bib numbers of all finishers in the order they cross the finish line. This will provide a backup of the finish order to assist the timing system operators with their system's order of finish. Video, such as an I-Pad can also be used to check finish order if needed but does not replace the recording of the bib numbers completed by the referee and the assistant referee.





RECORDING SHEET

1		26		51		76		101		126	
2		27		52		77		102		127	
3		28		53		78		103		128	
4		29		54		79		104		129	
5		30		55		80		105		130	
6		31		56		81		106		131	
7		32		57		82		107		132	
8		33		58		83		108		133	
9		34		59		84		109		134	
10		35		60		85		110		135	
11		36		61		86		111		136	
12		37		62		87		112		137	
13		38		63		88		113		138	
14		39		64		89		114		139	
15		40		65		90		115		140	
16		41		66		91		116		141	
17		42		67		92		117		142	
18		43		68		93		118		143	
19		44		69		94		119		144	
20		45		70		95		120		145	
21		46		71		96		121		146	
22		47		72		97		122		147	
23		48		73		98		123		148	
24		49		74		99		124		149	
25		50		75		100		125		150	

Record - REGION-CLASS-GENDER



THE TIMING SYSTEM OPERATOR AT REGIONAL MEETS

The importance of meeting with the timing system operator cannot be overstated when officiating a regional meet. Make sure that the timing system is set for the correct method of scoring and breaking ties as presented in the following slides. Timing systems have multiple options for scoring and breaking team ties in cross country. Make sure the system has been set to follow the rules in the NFHS rule book only.



SCORING IN A REGIONAL MEET

- If fewer than five runners of a team finish (in 3A, 4A, 5A) or fewer than four runners of a team finish in 2A, the places of all members of that team shall be removed for scoring the team results.
- Ties in team scoring shall be resolved by comparing the sixth runner's places (in 3A, 4A, 5A), or the fifth runner's places in 2A. The team with the higher finisher shall prevail. If a team does not have a sixth runner (3A, 4A, 5A) or a fifth runner in 2A, the team that does shall prevail.
- If only five runners of tying teams finish (in 3A, 4A, 5A) or four runners in 2A, the tie shall be resolved by totaling the scores of the first four runners (3A, 4A, 5A) or the first three runners for 2A.



ENTRIES AND SCORING A REGIONAL MEET

- Each classification is allowed to run 2 additional runners at the regional meet. 3A, 4A, and 5A may enter up to 9 runners at the regional meets and 2A up to 8 runners. All runners should be listed in the official results but any runners over 7 for 3A, 4A and 5A and 6 for 2A will be pulled out for team scoring.
- For every classification, the top 4 teams from each region qualify for state and the top 15 placers qualify for state.



EXTRA ENTRIES FINISHING IN THE TOP 15 FINISHERS

- If an 8th, or 8th and 9th, individual on a team places in the top 15 at regionals that person gets a ribbon for a top 15 finish but does not qualify for state as an individual. Neither person displaces any other competitor for the purposes of team scoring. In this case place 16 and possibly 17, if both the 8th and 9th runners break the top 15, would advance to state instead. This is the only way that places 16 or 17 can advance to state as individuals. If place 16, or 16 and 17, are already a member of a state qualifying team, no individuals would advance to state in place of the 8th, or 8th and 9th individuals from the same team.
- *For 2A, this would impact the 7th and 8th runners



QUESTIONS ?

CONTACT KC LOGAN, JENN ROBERTS-UHLIG, OR GARY STRUBEL

Jenn Roberts Uhlig – CHSAA Associate
Commissioner

jrobertsuhlig@chsaa.org

K.C. Logan – State Rules Interpreter

kclogan@hotmail.com

Gary Strubel – CTFOA President

gharleyclassic@gmail.com

